



## SPEED SENSOR >> SGEX SERIES <<

- » Simple and direct mounting on the motor shaft
- » Single or quadrature pulse output
- » PNP or NPN outputs
- » Power range from 5 to 24V
- » Standard metallic threaded connector
- » Activity indicator LED

### INTRODUCTION

SGE Speed Sensor has been developed with the aim of achieving a equipment of low cost and easy installation, which generates pulses from the magnetic sensor type. The pulse output can be simple type (A ) or two quadrature signals (A and B ) depending on the model. Using these pulses is possible to monitor or easily calculated from the controller: speed, direction of rotation, under or over speed or other parameters of the computer to which it is attached.

Assembly is quick and simple, it is done by inserting a screw through a central through hole, which fits over the shaft of the device to be sensed.

It has small dimensions and low weight, so it can be directly mounted to the shaft without extra supports. However, for the applications that require it, a additional mounting bar can be added.

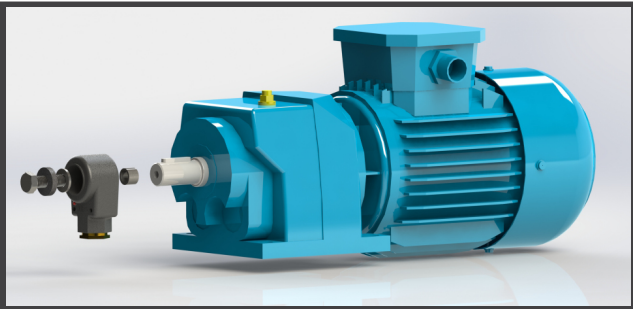
It also has an output with a metallic threaded connector, allowing placement of connectors for pipelines.

It has NPN or PNP outputs depending on the model type, with reverse polarity protection at the input and short circuit at the output.

### INSTALLATION

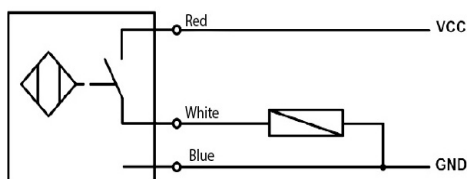
#### Mounting and Installation

- Drill the motor shaft.
- Perform internal thread according to the fixing screw.
- Insert the fixing screw on the central through hole of the sensor.
- Screw the screw into the motor shaft.
- Place cover cap.

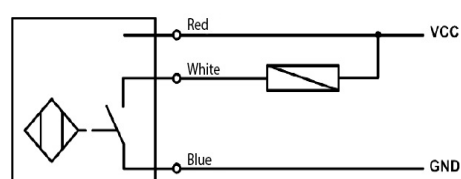


### WIRING DIAGRAM

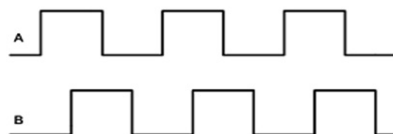
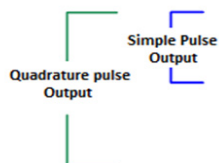
#### PNP OUTPUT



#### NPN OUTPUT



## OUTPUT TYPE



## DIMENSIONS

SIDE	DIMENSION [mm]
HIGH	40
WIDTH	70
DEPTH	32

## ORDER CODE SETTING

PRODUCT CODE		SGE - PNP - S - M10 - 01 - M					
Family identifier		SGE	PNP	S	M10	01	M
Speed Sensor	SGE						
Output type		PNP					
PNP Output	PNP						
NPN Output	NPN						
Pulses type		S					
Simple pulses output	S						
Quadrature pulses output	Q						
Screw type		M10					
#10 Metric	M10						
#6 Metric	M6						
10/32 Inches	P10/32						
Wire		01					
Standard length 1m (by default)	01						
Desired length (in meters)	XX						
Threaded connector channeling		H					
1/2" BSC	H						
1/2" BSP	M						